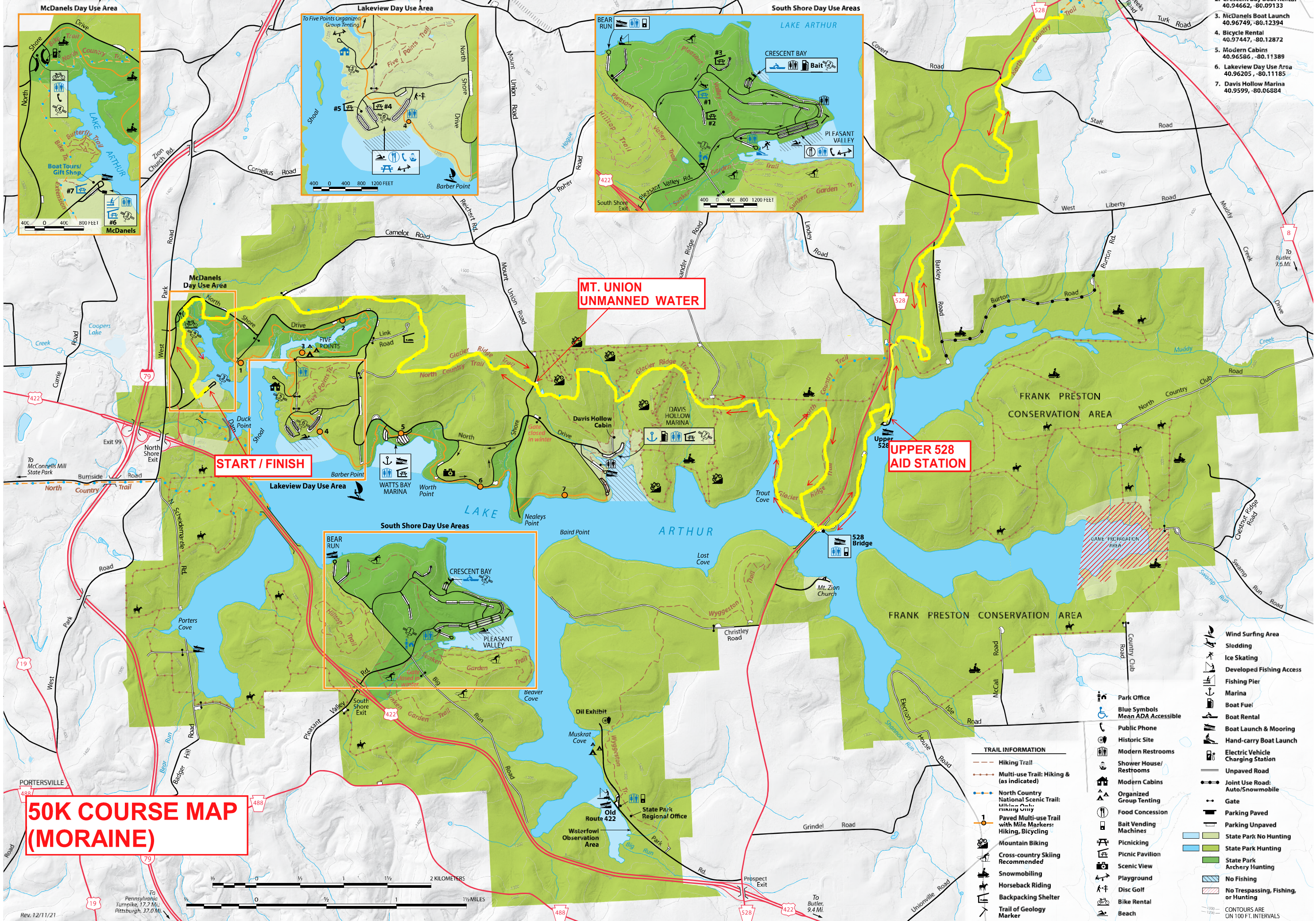


2. Crescent Bay Boat Rental
40.94662, -80.09133
3. McDanel's Boat Launch
40.96749, -80.12394
4. Bicycle Rental
40.97447, -80.12872
5. Modern Cabins
40.96586, -80.11389
6. Lakeview Day Use Area
40.96205, -80.11185
7. Davis Hollow Marina
40.9599, -80.06884

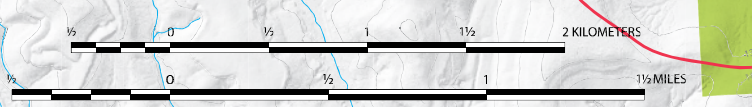


START / FINISH

**MT. UNION
UNMANNED WATER**

**UPPER 528
AID STATION**

**50K COURSE MAP
(MORaine)**

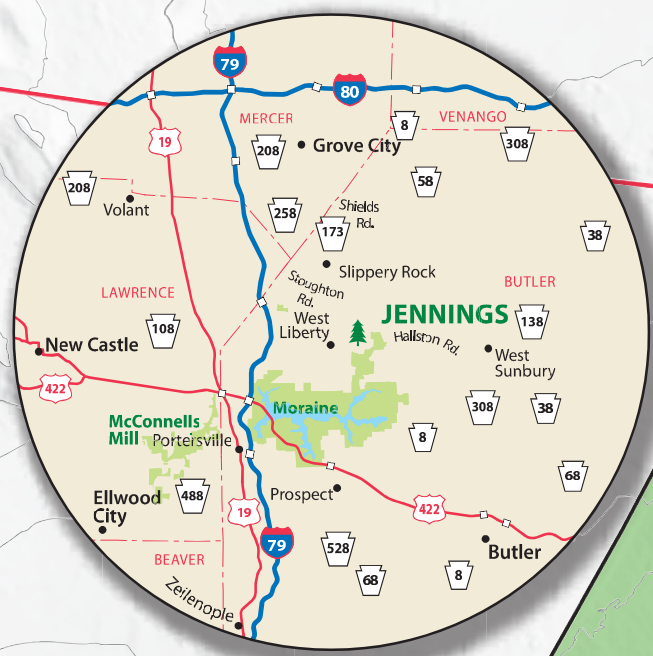


TRAIL INFORMATION

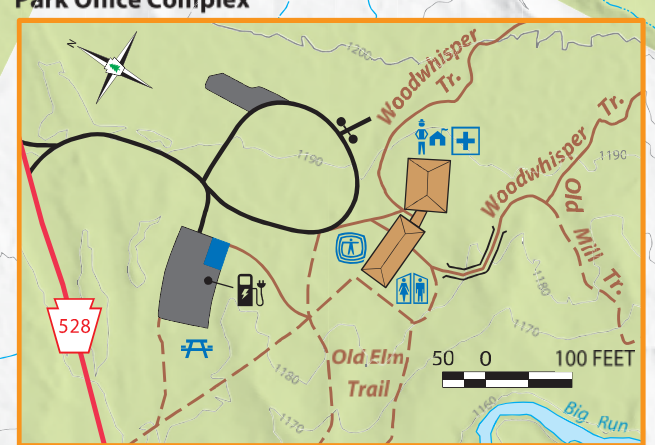
- Hiking Trail
- Multi-use Trail: Hiking & (as indicated)
- North Country National Scenic Trail: Hiking Only
- Paved Multi-use Trail with Mile Markers: Hiking, Bicycling
- Mountain Biking
- Cross-country Skiing Recommended
- Snowmobiling
- Horseback Riding
- Backpacking Shelter
- Trail of Geology Marker

- Wind Surfing Area
- Sledding
- Ice Skating
- Developed Fishing Access
- Fishing Pier
- Marina
- Boat Fuel
- Boat Rental
- Boat Launch & Mooring
- Hand-carry Boat Launch
- Electric Vehicle Charging Station
- Unpaved Road
- Joint Use Road: Auto/Snowmobile
- Gate
- Parking Paved
- Parking Unpaved
- State Park No Hunting
- State Park Hunting
- State Park Archery Hunting
- No Fishing
- No Trespassing, Fishing, or Hunting
- CONTOURS ARE ON 100 FT. INTERVALS

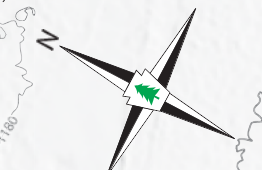
JENNINGS ENVIRONMENTAL EDUCATION CENTER



50K AND 50 MILE COURSE (JENNINGS)



JENNINGS AID STATION



- Park Office
- Blue Symbols Mean ADA Accessible
- Building
- Education Center and Classroom
- Wayside Exhibit
- Historic Site
- Self-guided Trail
- Modern Restrooms
- Non-flush Restrooms
- First Aid
- Picnicking
- Picnic Pavilion
- Hiking Trail
- Paved Trail
- North Country National Scenic Trail
- Cross-country Skiing Recommended
- Bridge
- Gate
- Parking ADA Accessible
- Parking Paved
- Parking Unpaved
- Electric Vehicle Charging Station

- State Park No Hunting
 - State Park Hunting
 - State Park Special Regulation Hunting: Archery and Shotgun—Birdshot Only
 - Prairie Ecosystem
 - Wetlands
- CONTOURS ARE ON 20 FT. INTERVALS